

Technical Specifications Vacuum Contactor & Starter Ratings

CSA 5KV. 400A
UL Recognized 5KV
500V 7.2KV 400A

A

Standard - NEMA ICS 2-324, UL 347, CSA 22.2, IEC 470, BS 775

Description	200A	400A	600A	1200A
Catalog Number & Rated Voltage	2.5KV MVC77U032A25	400A MVC77U034A25	600A MVC77U036A25	1200A SVC77U031225
	5.0KV MVC77U032A50	400A MVC77U034A50	600A MVC77U036A50	SVC77U031250
	7.2KV MVC77U032A72	400A MVC77U034A72	600A MVC77U036A72	SVC77U031272



Power Application Ratings

Voltage KV	2.5	3.3	4.16	6.6	
Motor Type	Current	Motor HP			
.8 P.F. Ind. or Syn Motor	200A	900	1250	1500	2500
1.0 P.F. Syn Motor	200A	1000	1500	1750	2750
.8 P.F. Ind. or Syn Motor	400A	1750	2250	3000	5000
1.0 P.F. Syn Motor	400A	2000	2500	3500	5250
.8 P.F. Ind. or Syn Motor	600A	2250	3250	4500	6750
1.0 P.F. Syn Motor	600A	2250	3500	4750	7000
.8 P.F. Ind. or Syn Motor	800A	2750	4000	5500	8000
Transformer Load KVA					
Three Phase Transformer	200A	750	1000	1500	2000
	400A	1500	2000	3000	4000
	600A	2500	3000	4250	6000
	800A	2750	3750	5250	7500
	1200A	4100	5000	7000	10000
Capacitor Load KVAR					
Three Phase Capacitor	200A	550	750	1050	1500
	400A	1125	1500	2250	3000
	600A	1650	2250	3375	4500
	800A	2200	2900	4500	5000
	1200A	2750	3750	5625	7500

Power Ratings

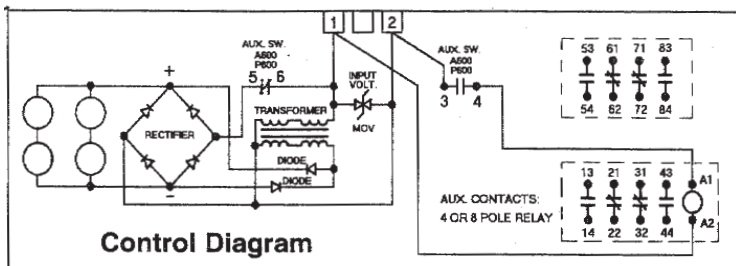
Operational Rated Current	200A	400A	600A	800/1200A
Operational Rated Frequency	50/60Hz	50/60Hz	50/60Hz	50/60Hz
E1 Interrupt Rating	2.5KV	20 MVA Equivalent to 4.62 KA		-----
MVA & KA Values	5.0KV	40 MVA Equivalent to 4.62 KA		-----
Contactor Only	7.2KV	60 MVA Equivalent to 4.81 KA		-----
E2 Fuse Co-ordination Rating	5.0KV	400 MVA 45.7 KA RMS		-----
MVA & KA	5.0KV	38R max. fuse size		-----
Withstand KA	5.0KV	57.8 KA - Peak, 38R - Fuse		-----
Short Time Current 1 Sec. KA	6	7	9	12
	4	5	6	9
	2	2.6	3	6
Switching Frequency	300/Hr			
Elec. Life at Rated Current	.6 x 10 ⁶	.40 x 10 ⁶	.250 x 10 ⁶	.250 x 10 ⁶
Mechanical Life	.75 x 10 ⁶			
Dielectric Strength	20KV 1 min.			
Impulse withstand B.I.L.	1.2 x 50 us			
	60KV			
Chopping Current Max.	.9A			

Control Ratings AC&DC

Rated Control Voltage	120/240V 50/60Hz AC	125/250V DC
Allowable Fluctuation	+10-15%	+10-20%
Closing Power VA/Duration	650VA/45MS	1300VA/45MS
Holding Power	7VA AC .47A DC	14VA AC .924A DC
Opening Time Ave.	90 MS at 60Hz	
Closing Time Ave.	40 MS at 60 Hz	
Pick up Voltage Min.	102V or less	
Drop Out Voltage Ave.	70% or less	
Recommended Control Trans.	(AC Only) 300VA	600VA

Application Conditions

Standard	Current	Continuous AC/DC 10A/5A
Auxiliary	Voltage	600V Max. - 48V Min. NEMA A600 (AC) P600 (DC)
Contact	AC	Make/Break 7200VA/720VA
Ratings	DC	Make/Break 125/250V 138VA 300/600V 138VA
Additional	Current	Continuous AC/DC 10A/2.5A
Auxiliary Contact	Voltage	600V Max. - 48 Min. NEMA A600 (AC) Q300 (DC)
Relay Ratings	AC	Make/Break 7200VA/720VA
	DC	Make/Break 125/250V/69VA
Weight		48 lbs. 96 lbs.



Accessories & Options:

- 1, 2, 4, & 5 Pole contactors, consult factory.
2. Mechanically interlocked contactors available, page A41.
3. Medium voltage starters available in non-drawout designs in NEMA 12 & 3 enclosures, consult factory.
4. Terminal Lug Kits, page A36.